



## CAPABILITIES PRESENTATION



**Date:**  
17<sup>th</sup> April

**Presented By**

---



## PIONEERING CONTRACT RESEARCH & TESTING COMPANY

Established in 1984, Vimta is one of the first testing and contract research companies in India building sustained capabilities over the last 35 years



**Preclinical Research Facility**



## LARGEST LAB FOOTPRINT IN THE COUNTRY

Headquartered in Hyderabad, we have 20 satellite labs across India covering 4,00,000 sq ft of lab space



**Clinical Research Facility**



## COMPREHENSIVE SOLUTIONS

Integrated service platform for large and small molecules;  
Serving Pharma, Biopharma, Medical Devices, Food industries



**Analytical Facility**

# Spectrum of Industries Served



Pharma &  
Biopharma

Animal  
Health

Medical  
Devices

Food &  
Beverages

Personal  
Care

Many  
Others

**Quality Systems** st  
Pre-Qualified by WHO  
**Business Continuity Plan**  
**Innovations & Technologies**  
Ultra Trace Analytical Facility  
Leachables and Extractables studies  
**Analysis of**  
Dioxins & Furans  
Customer Specific  
Contract Labs  
Widest Variety of  
Analytical Technologies  
**Knowledge**  
Approved by European  
Commission for  
PCP Trace Analysis  
Approved under  
Indian EP Act-1986  
**Infrastructure**  
World Class Contract Research and Testing Facility  
\$30 million Investment for Capacity Building  
LEED Gold Certified Green Building  
**Credibility/Leadership**  
Public Private Partnership with UNIDO for  
Laboratories Capacity Building

- Lab in Asia to be pre-qualified by WHO
- Lab in India to set up ultra trace analytical facility
- Lab in India to offer extractables & leachables studies
- Lab in India to introduce customer specific contract labs
- And only lab in India to be approved by European Commission for PCP trace analysis in food exports to Europe, since 2008
- Lab in India to set up a truly world class laboratory
- Lab in India to be approved under Indian EPA act-1986
- Lab to demonstrate competencies at a time to >50 GLP inspectors from OECD member countries

## Enabling our Partner Deliver Sustained Product Quality to the Patients

Preclinical Safety

---

Characterization  
Imp. Characterization  
Development, Validation

---

Product Quality Assurance  
Stability Studies  
Batch Release  
Packaging Testing

---



Bioequivalence &  
Clinical Efficacy Trials

---

Product Development Support  
Comparator Product Studies  
Environment Fate Studies

---

Regulatory Support

---

## Assuring Regulatory Compliance

# Culture and Cornerstones



Quality



Innovation



People



Technology

Driven by Quality. Inspired by Science



Assisting Under Privileged Children with Reconstructive Surgery Needs

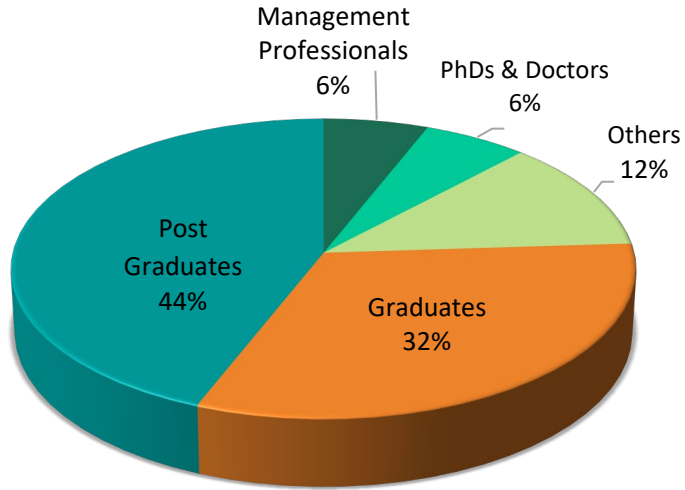


Providing Children with Immunization



Enhance Safe Food Access to More than 5000 Children





## People

- ~1100 dedicated multi disciplinary team
- Well trained team of 700 scientific & analytical professionals
- Strong managerial and technical competency

## Customers

- >25,000 customers across 45 countries
- ~ 250 active pharma customers
- 85% repeat customers
- 91% business is from repeat customers
- 62% business is from top 10 customers
- 2018-19 added 55 new customers



# Customer Centricity



Integrated involvement  
of QA in projects



Strong Project  
Management



Continuous Tracking  
of Projects



Clear  
Communications



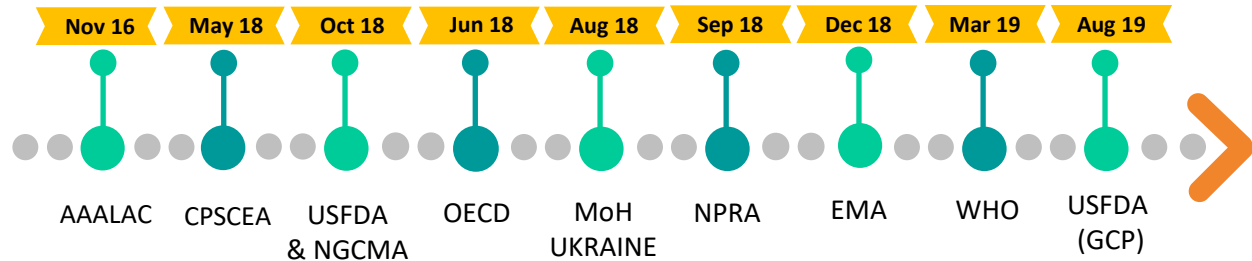
Quick Escalations  
of Challenges

# Strong Regulatory Track Record

# 70

## SUCCESSFUL REGULATORY AUDITS

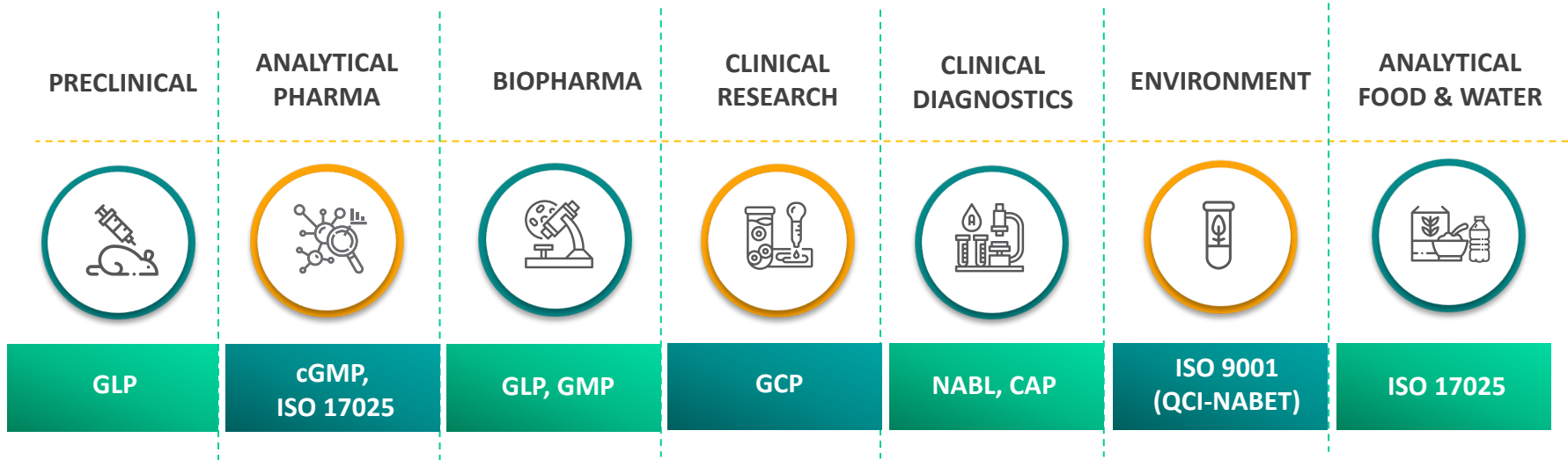
USFDA, WHO, NGCMA, MHRA, EMA, BfArM, Afsaaps, DCGI, Medsafe, DRAs of Denmark, Sweden, Portugal, Brazil, Malaysia, Ukraine, New Zealand, South Africa



DCA India



# Quality System



**Culture of Compliance to QMS**

# Accreditations, Approvals, Certifications

Analytical  
Pharma



Analytical  
Food



Preclinical



Clinical  
Research



Environment



CRL



# Quality Management System

- Over 1000 SOPs - From receipt to reporting & archival
- Qualification, validation, maintenance
- Records & Data Management
- Change Control

- Quality metrics
- Operational metrics
- Trends
- Management review meetings



- Training
- Deviations & investigations
- OOX management
- CAPA
- Risk management

- Internal audits (>1000/yr)
- 100% QA review of data in GMP
- Vendor evaluations
- QA:Tech staff ratio is ~1:10



**ANALYTICAL**

- **Preclinical**

- ADME, PK
- Safety pharmacology
- Toxicology

Small Molecules

Biologics

Peptides

Complex Drugs

- **Clinical**

- BA/BE
- Patient PK, clinical end point studies
- CT

- **Analytical**

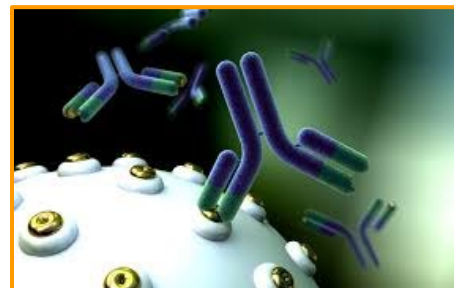
- Method dev & validation
- Extractables & leachables
- Stability studies
- Physical characterization
- Microbiology testing
- Genotoxic impurities
- Dissolution studies
- *In vitro* testing
- Packaging material testing
- Bioassays, immunogenicity & impurity assessments



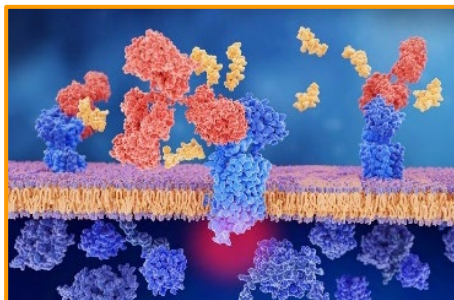
# Large Molecules - Experience & Expertise



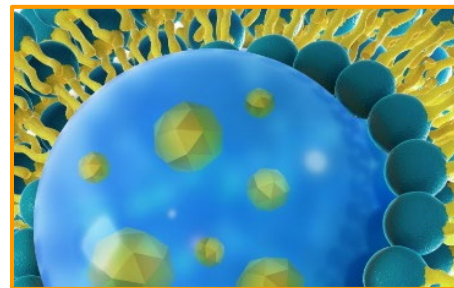
**Therapeutic Proteins**



**Monoclonal Antibodies**

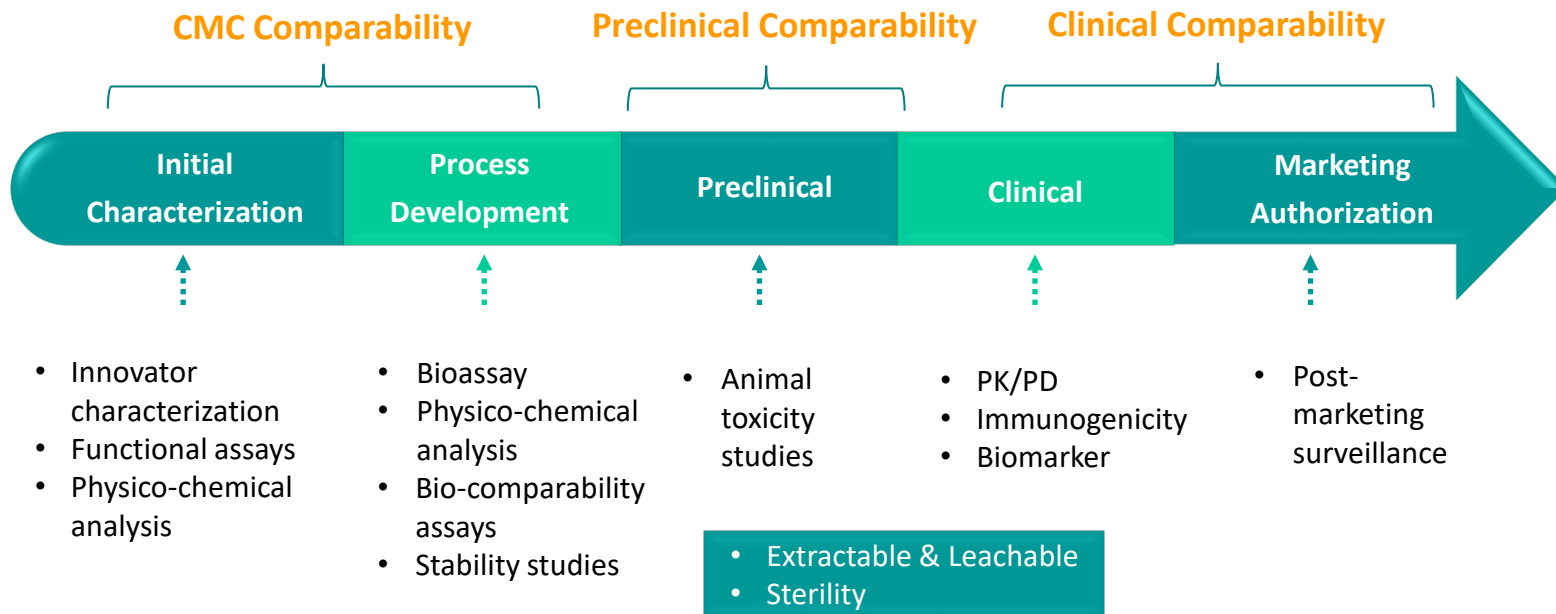


**Small Peptides**



**Non-biological Complex Drugs**

# Biologics Characterization Services



## Biosimilar Characterization

- Lot release assays
- Bio-comparability evaluation
- Impurity profiling (Process & Product)
- Immunogenicity assessment (*In vitro* & *In vivo*)
- Pharmacokinetic studies (Pre-clinical & clinical)
- Stability studies
- *In vitro* bio-waiver studies (Sucralfate, Iron Sucrose)
- Enoxaparin characterization as per US-FDA guidance Feb. 2016 and monographs
- Glatiramer acetate characterization

## PRODUCT EXPERIENCE

- Rituximab
- Bevacizumab
- Trastuzumab
- Etanercept
- GCSF
- Peg-GCSF
- Erythropoietin
- Darbepoietin
- Insulin and analogues
- PTH
- Exenatide
- Interferon 1
- PDGF

## SPECIALTY

- Specialty
- Bio-analytical & analytical
- Mechanism of action studies
- Bioassay
- PK
- Immunogenicity (ADA & Nab)
- Biochemistry

# Large Molecules - Services

- Functionality assays
  - Physico-chemical assays
  - *In vitro* biological assays
  - Target product profiling
  - Bio-comparability assays
  - Stability indicating assays
  - Potency assays
- Neutralizing antibody assays
  - Protein characterization
  - Impurity profiling
  - Immunogenicity
  - Post translational modifications
  - Extractables & leachables
  - Stability testing
- Batch release testing
  - Water quality testing
  - GMP manufacturing facility validation support
  - Preclinical method development and validation support

## IDENTITY TESTS

- SDS-PAGE
- Western blot
- Iso-electric focusing
- Intact mass
- Amino acid sequencing
- Charge variant analysis
- Glycan profiling
- Disulphide mapping

## ASSAY

- Quantification by
- RP-HPLC
  - ELISA
  - Multiplex

## POTENCY

- Bioassay
- ADA assay
- NAb assay
- Binding assay
- PLA3.0 (CFR21 Part 11)

## IMPURITY

- Process related
- Product related
- HCP & HCD related impurities

### Miscellaneous

- LMWH
- Glatiramer acetate
- PK/PD

- Method development & validation
  - Extractables & leachables
  - Stability studies
  - Physical characterization
  - Microbiology testing
  - Comparator studies
  - Residual solvents
  - Genotoxic impurities
  - Dissolution studies (multi media, alcohol dose dumping studies)
  - Purposeful degradations
- Metal analysis ICH Q3D, USP 232
  - DP defect investigations
  - Formulation optimization studies
  - Raw material, excipient qualification
  - *In vitro* testing
  - Batch release
  - Water quality testing
  - GMP facility validation support services
- Analytical support for Preclinical studies
  - Reference standard characterization
  - Compendial testing
  - Packaging material testing USP 661.1 & 661.2



# Small Molecules - Experience

- Drug product
  - Drug substance (API)
  - Raw material
  - Regulatory starting material
  - Packaging material
  - Excipients
  - Dietary supplements
- Routine
  - Potent
  - Toxic
  - Light sensitive
  - Temperature sensitive
  - Challenging molecules
  - Non Biologic Complex Drug molecules
- Tablets
  - Capsules
  - Topical solutions
  - Ointments
  - Creams
  - Lotions
  - Injections
  - Inhalations
  - Suspensions
  - Dermal Patches

# Stability Studies

- Clinical stability
- Developmental stability
- Photo stability studies
- Transport stability studies
- Freeze thaw cycling stability studies



**4,17,000 L  
capacity with  
adequate standbys**

**Advanced  
Chiller based cooling  
system technology**

**24/7 Online  
Temp/RH monitoring  
with backup through  
BMS**

**Risk Mitigation:  
Power backup in  
redundancy**

**Risk Mitigation:  
Mobile alerts &  
electronic door  
access**

**Risk Mitigation:  
Robust AMC program**

# Leachables & Extractables

- Pioneer in India to offer E/L services to Indian and overseas pharma / biotech / medical device companies
- Conducted **~500 E/L** studies. Data submitted to regulatory bodies in USA & EU and accepted

## Studies Performed in

- Glass vials
- LDPE containers
- Gaskets & O-rings
- Resins
- Prefilled Syringes
- Dermal patches
- Disposables (Bioprocess–single use)
- Rubber stoppers
- PP containers
- Inhalation devices
- Films
- Large volume containers
- Tubing
- HDPE bags
- EPDM packaging
- Implants
- Injectable bags/vials
- Pressurized inhalers
- Filters

Ophthalmics

Inhalations

Oral Vaccines

Parenterals

Topicals

- Kill rate studies
- Zone inhibition studies
- Microbial limit test
- Sterility test
- Bacterial endotoxin test



- Antimicrobial efficacy test
- Disinfectant efficacy test
- Environmental monitoring
- Stability studies
- Method development & validation



12 Years of Experience	Customizable Lab Setup
Tuned to 24/7 Operations	Dedicated Manpower and Co-Management
Securely Connectable to Customer LIMS for Concurrent Data Access	FTE Model or Fee for Service Model

## VALUE

COST, QUALITY, TIME  
KNOWLEDGE



**An Extension of  
Customer's Own Facility**

- HPLC – UV, PDA, RI, FL, ELSD (38)
- Prep –HPLC
- UPLC UV-VIS PDA
- UHPLC UV-VIS PDA (3)
- GC – FID, TC, MS (18)
- GC –HS
- GC –MS/MS (17)
- GC MS –TOF
- GC-MS (02)
- LC MS – TOF
- HRGCMS
- LC – MS/MS (28)
- LC Q TOF
- LC MS Triple TOF
- CHNS (02)
- IC (09)
- DSC
- TGA
- pXRD
- FT RAMAN
- SEM
- PSD
- Particle counter
- FTIR, Near IR (12)
- DNA sequencer
- qPCR
- Capillary electrophoresis
- i3X multimode reader
- Particulate matter tester
- ICP MS (12)
- ICP OES (02)
- AAS (06)
- Dissolution I, II, IV (07)



**PRECLINICAL**



# Capabilities

## Pharmacology

- Pain & inflammation
- Metabolic disorders



## ADME / PK

- *In vitro*
- *In vivo*



## Safety Pharmacology

- CVS
- CNS
- Respiratory
- GI studies
- Drug-drug interaction



## Toxicology

- *In vitro* toxicology
- General toxicology
- Genetic toxicology
- DART
- Carcinogenicity



## General Toxicology

- Acute toxicity studies
- Dose range finding toxicity studies in rodents and non-rodents
- Repeat dose toxicity studies in rodents and non-rodents (28-day to 6-12 months; >120 studies)
- Carcinogenicity studies in rats/mice

## Reproduction Toxicology

- Reproduction/developmental toxicity screening studies in rats
- Segment II developmental toxicity studies in rodents and rabbits
- 1, 2 and 3 generation reproduction toxicity studies in rats
- Extended one-generation reproductive toxicity studies in rats
- Developmental neurotoxicity studies in rats

>75

Studies/Year  
In Genetic Toxicology &  
Safety Pharmacology

>100

Analyses/Year in  
Analytical Chemistry

>200

Analyses/Year in  
Bioanalytical Services

>10,000

Clinical Pathology  
Samples/Year

>8,000

Necropsy  
Samples/Year

>12,000

Histopath  
Slides/Year

## Pharmacology

- Core operations area of 33,000 sq. ft.
- 27 rodent experimental rooms
- 150 kennels
- Robust building management system (BMS) to control environmental parameters



**CPCSEA**  
COMMITTEE FOR THE PURPOSE  
OF CONTROL AND SUPERVISION  
OF EXPERIMENTS ON ANIMALS



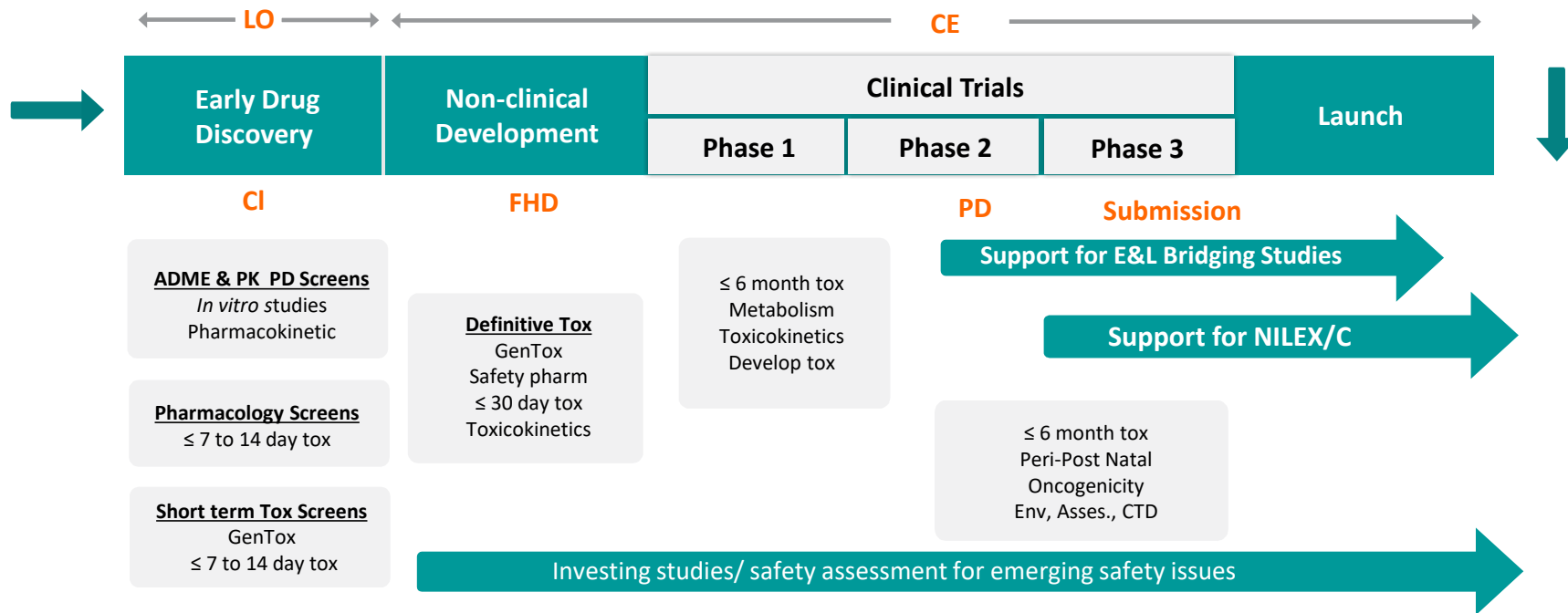
## Models

- Mice
- Rats
- Hamsters
- Guinea pigs
- Rabbits
- Dogs

## Routes of Administration

- Oral (gavage, capsule, dietary)
- Dermal (topical, ID, SC)
- IM, IP, IV
- Intranasal/sublingual
- Intravaginal/intraperineal
- Intrarectal
- Ocular (topical, intravitreal)
- Cheek pouch
- Surgical

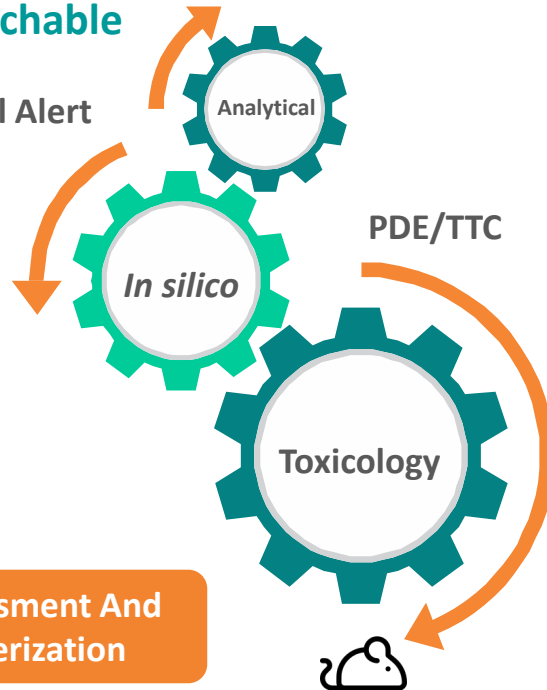
# Track Record



Successfully contributed for 16 IND, 10 Repurposing & over 300 Impurity qualification program

Impurity/Leachable

Structural Alert

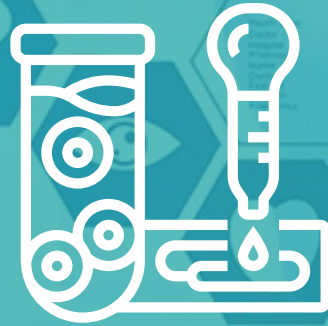


Risk Assessment And  
Characterization

Over 120 Reports Submitted to FDA  
& Other Agencies Without any Issue

Generated ~100 Risk Assessment  
Reports

Experience with TOPKAT, Multicase  
and Dereck Among Others



# CLINICAL RESEARCH

# Service Portfolio



Clinical Operations

Medical Monitoring

Medical Writing

Bio-analysis

Method Development & Validation

Statistical Data Management

SAS programming

Quality Assurance

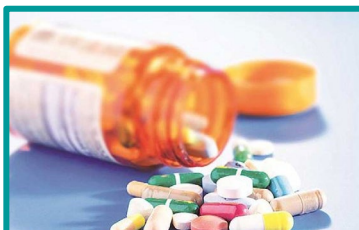
Regulatory Support





## Therapeutic Segments

- Anti - retrovirals
- Anti-hypertensive
- Anti-hyperlipidemic
- Anti-psychotic
- Pain Management
- Respiratory
- Gastroenterology
- Endocrinology
- Oncology ( MAb)
- Metabolic disorders
- Ophthalmic
- Performance Studies



## Dosage Forms

- Tablets
- Capsules
- Orally disintegrating strips
- Granules
- Gels
- Oral solutions
- Dermal patches
- Topical applications
- Injectable
- Inhalation



## Designs

- Cross over
- Parallel
- Steady state
- Scaled average bioequivalence
  - Partial reference replicate
  - Full reference replicate
- Studies on Endogenous compounds
- Food Drug Interaction studies
- Claim studies

# Capacities & Facilities



- **180** beds clinic
- **29000** healthy volunteer database including females
- **CAP & ISO 15189** accredited lab
- PGx Volunteer group
- Fully equipped ICU with 24/7 emergency support
- MedRA coding Ver 22.0
- Synchronized clock systems
- Controlled storage of IPs– 9600 L capacity **with backup**
- In-house canteen facility
- eCRF

9/2/2021



- **250,000** samples / year
- Large pool of qualified **LCMSMS (28)** & **GCMSMS (17)**, of different variants
- Validated software – **Analyst 1.6.3; Lab Solutions etc.**
- ICPMS **(12)** for elemental analysis
- ELISAs **(04)** for immunogenicity
- 30,000 L sample storages at -20°C & -70°C **with backup**

Vimta: Confidential



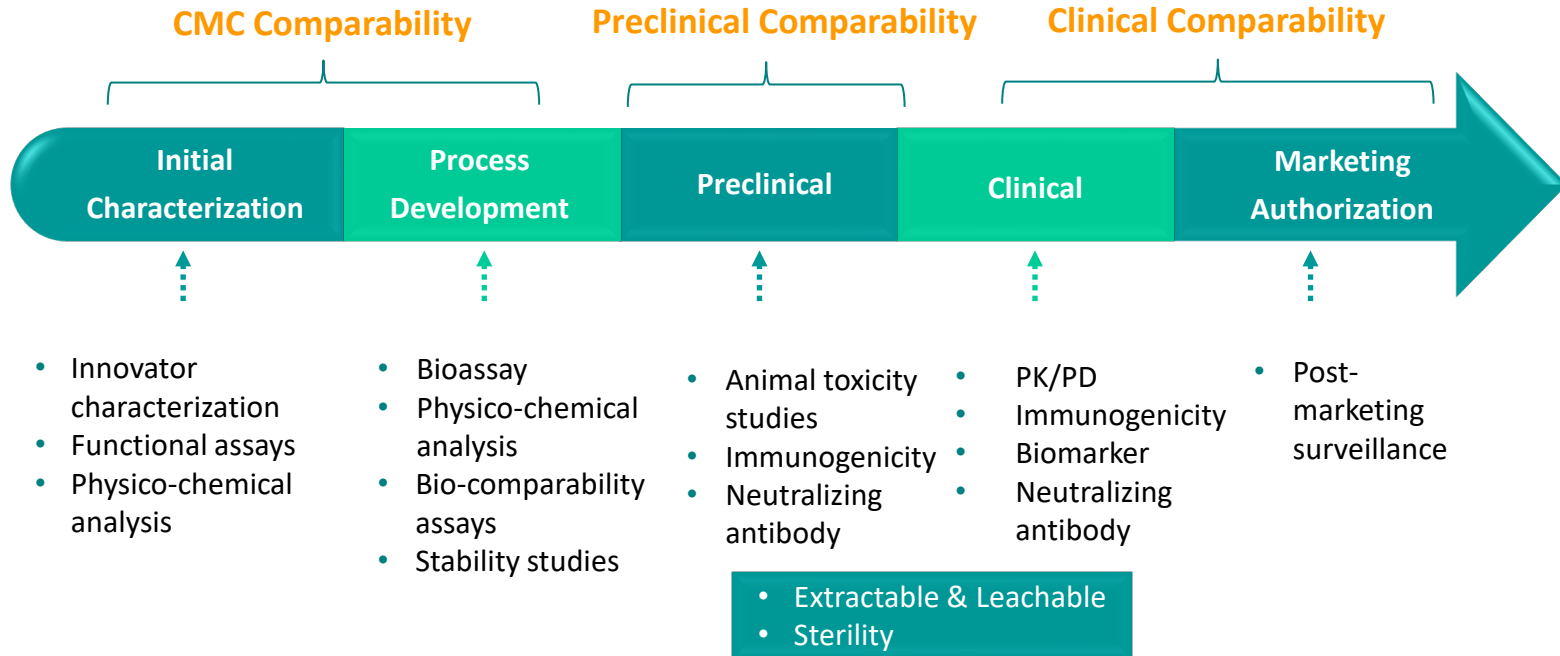
- WinNonlin version 8.2
- TRS Tool Box 6.3 pharma
- **SAS office analytics version 9.4**
- Dedicated servers for DM
- Secure storage of data
- Round the clock IT support
- **CDISC datasets**
  - SDTM/ADAM/SEND
- Customer specific FTP space for secure data transfer

38



**BIOPHARMA**

# Biologics Characterization Services



# Key Instrumentation

- **LC (UHPLC)-MS** (with ESI and APCI mode of ionization) with MS and MS/MS mode
- **HPLC** with PDA, refractive index and fluorescence detectors (GPC software)
- **Multimode plate reader** with luminescence, enhanced luminescence, fluorescence intensity, time resolved fluorescence, fluorescence polarization, absorbance and alpha screen
- **Capillary Electrophoresis** with UV, PDA and FLD detectors
- **cGMP Bioassay facility** equipped with Spectramax i3X multi-mode reader incubators(CO<sub>2</sub>); biosafety cabinets; inverted microscopes; **CFR21, Part 11 compliant software** (SoftMax Pro and PLA 3.0) for data analysis



CE 800 plus



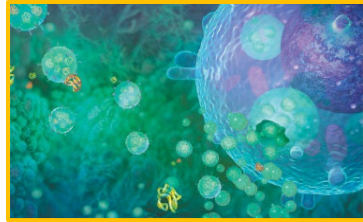
LC/MS 6600



Spectramax i3X

# Accreditations & Certifications





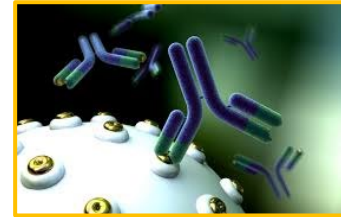
## Therapeutic Proteins

- Erythropoietin
- Darbepoetin
- Interferon alpha & beta
- Interferon 1
- PEG alpha interferon 2a
- Etanercept
- GCSF
- PEG- GCSF
- PDGF



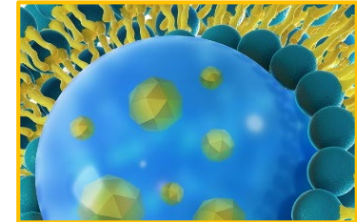
## Peptides

- Exenatide
- Teriparatide
- Liraglutide
- Vasopressin
- Glucagon



## Monoclonal Antibodies

- Bevacizumab
- Rituximab
- Trastuzumab
- Adalimumab
- Infliximab



## Non-Biological Complex Drugs

- Sucralfate
- Iron Sucrose
- Enoxaparin
- Glatiramer acetate
- Colesevelam
- Zolmitriptan
- Betadex Ether

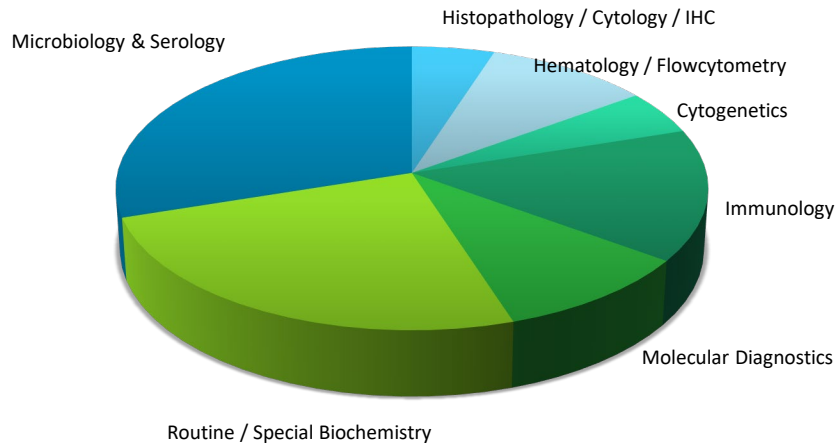
- *In vitro* bio-waiver studies (Sucralfate, Iron Sucrose)
- Enoxaparin characterization as per US-FDA guidance 2016 and monographs
- Glatiramer acetate potency thru IL-2 assay
- Colesevelam: Impurity profiling by CE
- Zolmitriptan: Impurity profiling by CE
- Betadex Ether: Average degree of substitution
- Fe II estimation in iron sucrose by CE





# CLINICAL DIAGNOSTICS

# Test Segments



- Histopathology / Cytology / IHC
- Hematology / Flowcytometry
- Cytogenetics
- Immunology
- Molecular Diagnostics
- Routine / Special Biochemistry
- Microbiology & Serology

# Strengths



Wide Service Network:  
Coverage in 180 cities &  
Network of 900  
Collection Centers



Central Reference  
Laboratory  
in Hyderabad



Dedicated Sales  
Force Network



8 regional  
Laboratories  
Across India

# Strengths



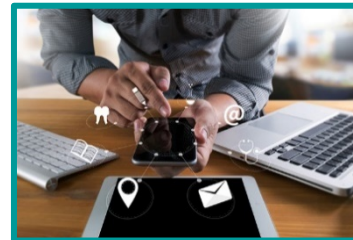
Strong Logistics  
Network



24 x 7 Lab  
Operations



Rapid Turn  
Around Time



IT Enabled Report  
Delivery System



## Experience

- Vimta corporate operational experience of 35 years
- CRL operational experience of 18 years
- 2 Million tests / year



## Expertise

- Wide range of tests and new assays
- 20 Technology platforms
- 1000 clinical tests & panels

- Molecular diagnostics automation with cancer genetics marker eg. KRAS, BRAF, EFRG, Pharmacogenomic markers
- TB drug sensitivity assays – 1<sup>st</sup> Line & 2<sup>nd</sup> Line
- Microbiology automation
  - Antibiotic sensitivity
  - Microbial identification - using sequencing
- FISH for prenatal & cancer markers



- Heavy metals analysis by ICP-MS and AAS
- Method development and validations for metal analysis
- Analysis in biology samples viz. plasma, serum, urine



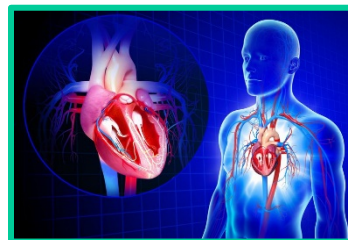
# Therapeutic Segments



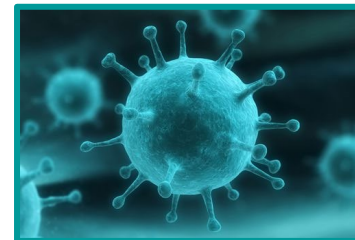
**Autoimmune**



**Immunology**



**Cardiovascular**



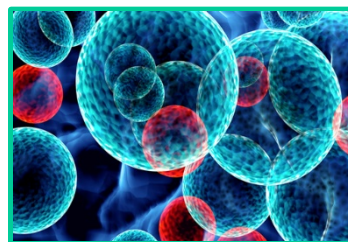
**Infectious Diseases**



**Endocrine &  
Metabolism**



**Obstetric &  
Gynecology**



**Oncology**



**Gastroenterology**



# Technology Platforms

LC-MS/MS, ICP MS

Flowcytometry

IFA

ELISA / MEIA/CMIA/ RIA / CLIA

Radiometric Culture

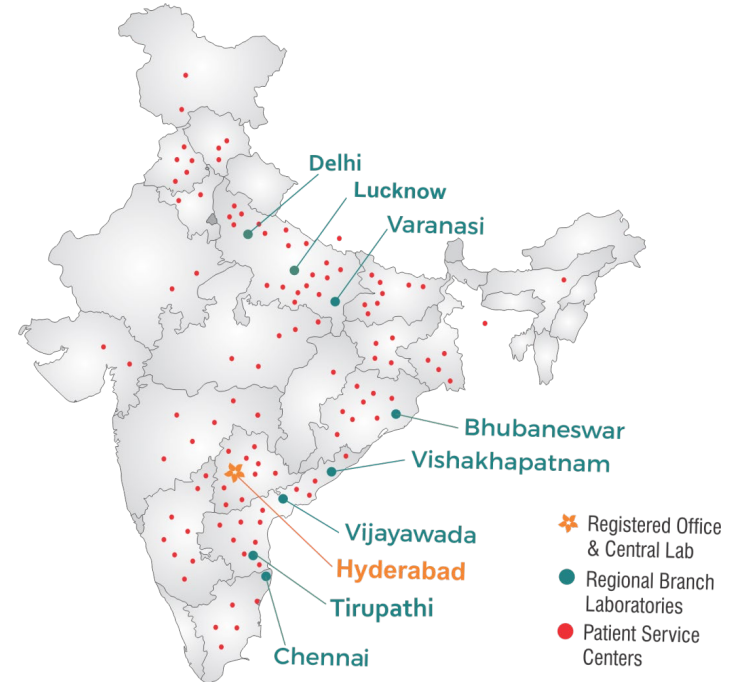
PCR / Gene Sequencing

Spectrophotometry

Automated Histopathology

Immunohistochemistry Workstations

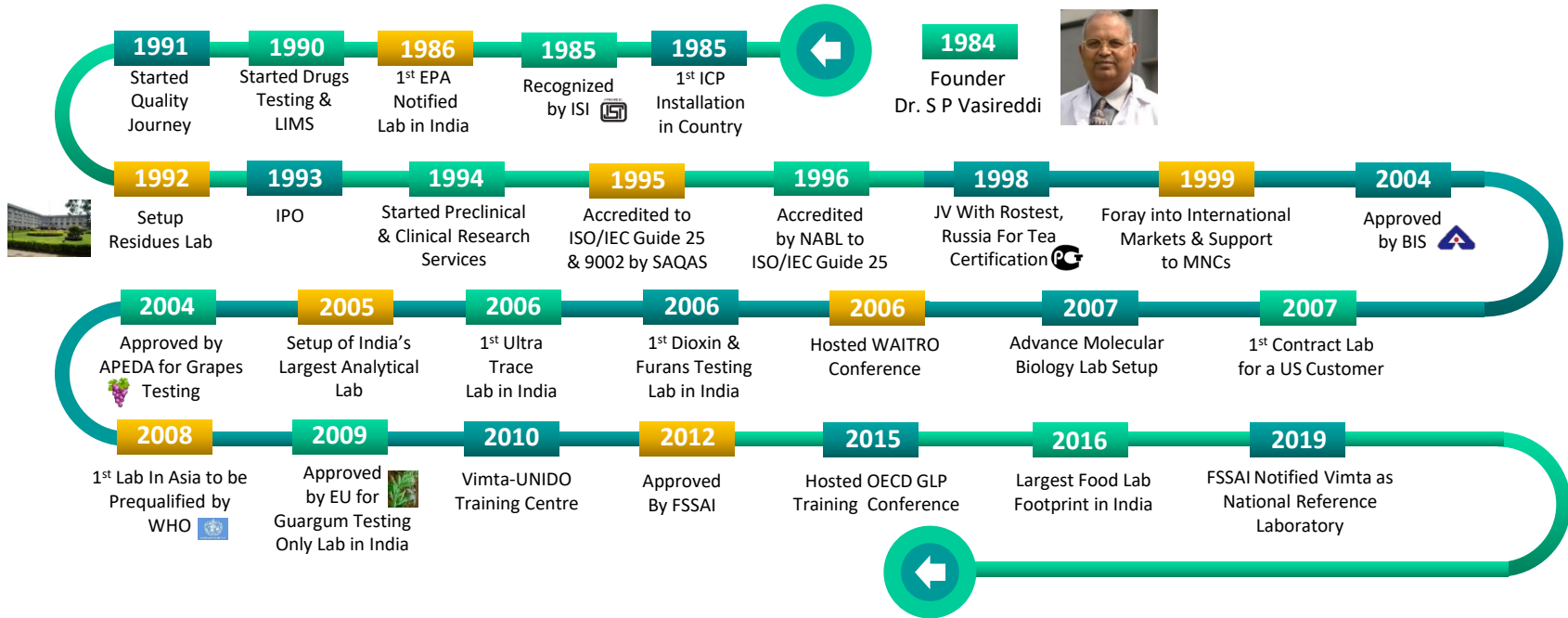
1. Hyderabad (HQ & Central Lab)
2. Bhubaneswar
3. Chennai
4. Delhi
5. Lucknow
6. Tirupati
7. Varanasi
8. Vijayawada
9. Visakhapatnam





# FOOD & WATER TESTING SERVICES

# History





## High Standards

Vimta is committed to high standards of corporate governance, business integrity and professionalism in all its activities



## Equal Employment

We are an equal opportunity employer



## Zero Tolerance

We have a 'zero tolerance' policy in regard to breaches of ethics



## Compliance

We comply with all applicable local and central governing laws with respect to our business

**Quality Systems** **st**  
Pre-Qualified by WHO  
**Business Continuity Plan**  
**Innovations & Technologies**  
Ultra Trace Analytical Facility  
Leachables and Extractables studies  
**Analysis of**  
Dioxins & Furans  
Customer Specific  
Contract Labs  
Widest Variety of Analytical Technologies  
**Knowledge**  
Approved by European  
Commission for PCP Trace Analysis  
Approved under Indian EP Act-1986  
**Infrastructure**  
World Class Contract Research and Testing Facility  
\$30 million Investment for Capacity Building  
LEED Gold Certified Green Building  
**Credibility/Leadership**  
Public Private Partnership with UNIDO for Laboratories Capacity Building

7<sup>th</sup> Oct 1985

Vimta establishes first Inductively Coupled Plasma (ICP)-Emission spectroscopy commercial lab in India

7<sup>th</sup> Jan 1993

Vimta implements first Laboratory Information Management Systems (LIMS) in India for its laboratory operations

30<sup>th</sup> April 2005

IBM designs and builds a state of the art data centre and networks for Vimta laboratories

28<sup>th</sup> Oct 2006

Vimta establishes India's first private ultra-trace laboratory for testing Dioxins, Furans and related compounds in food & environmental samples

29<sup>th</sup> April 2008

Vimta labs receives approval from European Commission to certify guar gum exports from India

17<sup>th</sup> July 2008

Vimta is the 1<sup>st</sup> WHO prequalified laboratory in Asia under the WHO prequalification of medicines programme

20<sup>th</sup> Sept 2010

Vimta establishes a centre of excellence in Public Private Partnership with UNIDO for training of testing laboratory directors under UNIDO of South-South cooperation

**Quality Systems** st  
Pre-Qualified by WHO  
**Business Continuity Plan Innovations & Technologies**  
Ultra Trace Analytical Facility  
Leachables and Extractables studies  
**Analysis of**  
Dioxins & Furans  
Customer Specific Contract Labs  
Widest Variety of Analytical Technologies  
**Knowledge**  
Approved by European Commission for PCP Trace Analysis  
Approved under Indian EP Act-1986  
**Infrastructure**  
World Class Contract Research and Testing Facility  
\$30 million Investment for Capacity Building  
LEED Gold Certified Green Building  
**Credibility/Leadership**  
Public Private Partnership with UNIDO for Laboratories Capacity Building

29<sup>th</sup> Sep 2015

Mumbai High court directs Vimta Labs to test noodle samples

13<sup>th</sup> Oct 2015

Vimta hosts training programme for OECD GLP inspectors, organized by GLP compliance monitoring authority of India

7<sup>th</sup> July 2016

Vimta establishes PAN India network of nine food testing laboratories

16<sup>th</sup> July 2016

Vimta conducts training program in partnership with CII and AOAC in “Advances in Food Safety Analytics” on 14&15 July 2016 for the food industry at its life sciences facility at Shamirpet, Hyderabad

24-28<sup>th</sup> Oct 2017

Vimta conducts 5 days training program on Good Food Laboratory practices (GFLP) to FSSAI analysts and inspectors at Hyderabad Facility

20-22<sup>nd</sup> Nov 2017

Vimta conducts 3 day training program to USP Scientists on Food sample extractions and analysis for monograph development in Food Chemical Codex (FCC)

# Strengths



## Experience

- Renowned as an expert
- Counted as a national referral lab by courts of law
- One stop shop for all routine testing needs and specialty tests



## Lab Network

- 10 lab locations PAN India
- Large capacities
- Ease of accessibility
- Sample transportation support



## Infrastructure

- 300,000 sq.ft of world class facilities
- Cutting edge technologies
- Redundant capacities
- Well demarked laboratories to avoid contamination



## Quality

- Cornerstone of our success
- Strong QMS
- Culture of continuous improvement
- Successfully audited by EU commission 4 times
- Visited by USFDA
- Strong PT performance



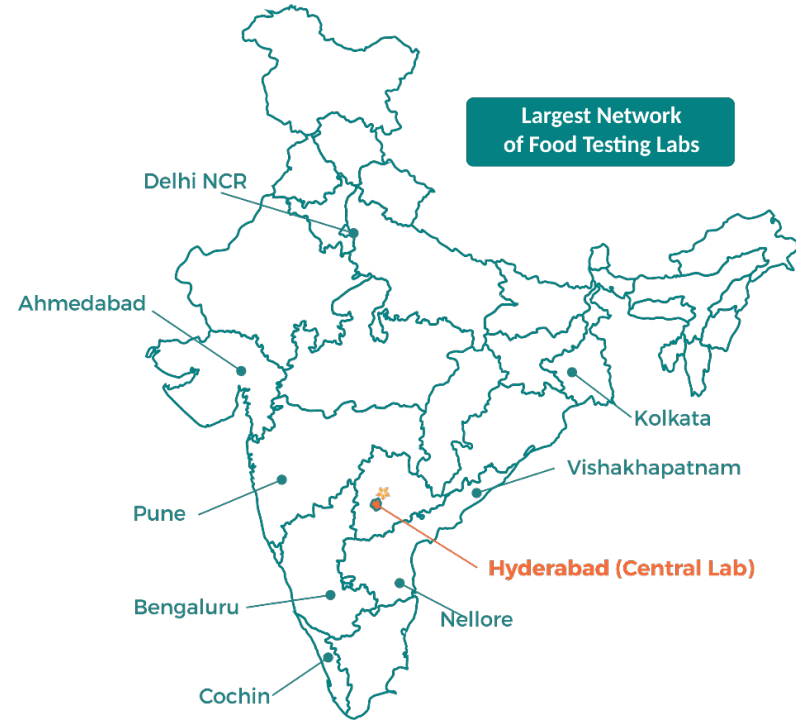
## Process

- Strong contract review
- Qualified analysts
- Validated equipment
- Validated methods
- LIMS
- Networked instrumentation
- Min TAT
- Express services



# Our Locations

1. Hyderabad (HQ)
2. Cochin
3. Bengaluru
4. Nellore
5. Visakhapatnam
6. Pune
7. Ahmedabad
8. Kolkata
9. Delhi NCR

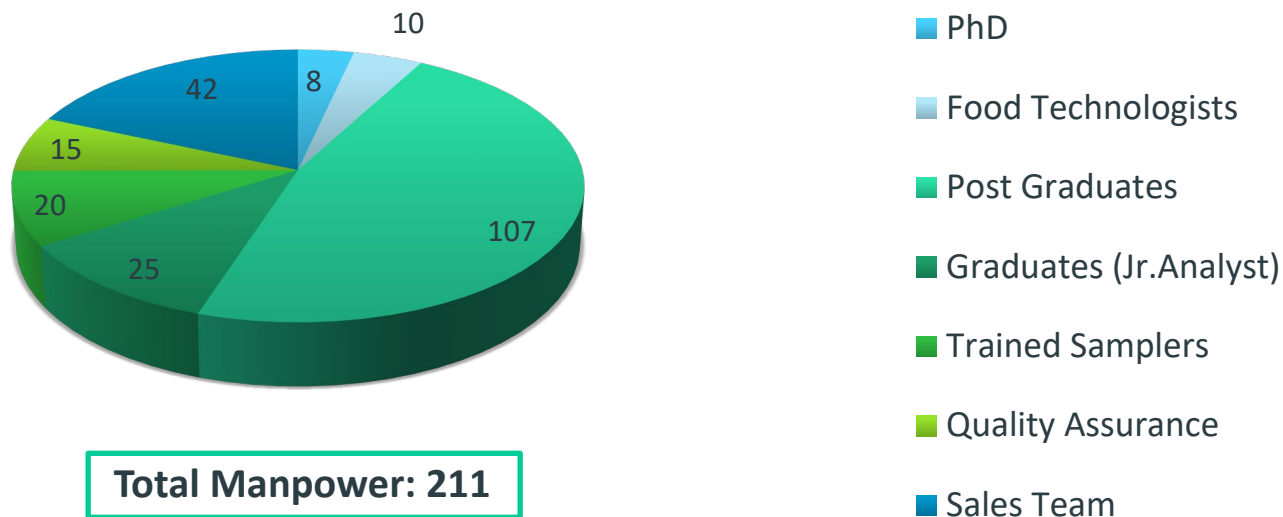


# Quality Systems: Accreditations & Recognitions



- Quality is the corner stone of our business
- Extensive participation in national and international proficiency testing programs and inter laboratory comparisons
- Internal quality audits and routine process audits
- Strong CAPA system for continuous improvements
- Strong personnel onboarding and continuous trainings
- Internal quality control checks
- Good documentation practices for data integrity and traceability
- Periodic management reviews

# Manpower related to Food & Beverage testing



Other research teams include toxicologists, biochemists, clinicians and biostatisticians.

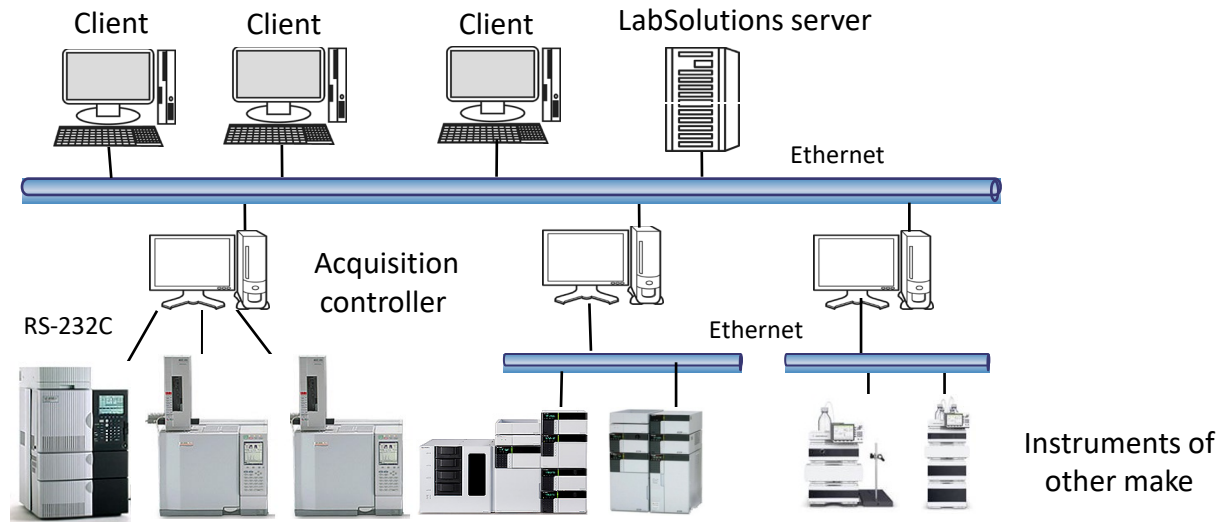
Instrument	No. of instruments
LC-MS/MS	30
GC-MS/MS	20
HPLC	39
GC	15
ICPMS	12
IC	10
HR-MS	1
ICPOES	2
AAS	5
FTIR	12
VIDAS	1
Q PCR	12

## Other Specialized Equipment to Support R&D Needs of Food & Beverage Industry

- LC-MS Triple TOF
- XRD – X ray Diffraction
- SEM - Scanning Electron Microscopy Qualitative analysis by RT-PCR
- TGA - Thermo Gravimetric Analysis
- DSC- Differential Scanning calorimetry
- Particle counter
- CE- Capillary Electrophoresis
- Flowcytometry
- Laser particle size analyser
- Biochemistry and hematology analysers

# Infrastructure Other than Equipment

- Labware LIMS V7
- Labsolutions version 6.72 with audit trails, multi stage review process, electronic signatures and electronic records; Empower version 3



## Strong project Management

- Allotment of key account manager for clients/projects
- Significant time invested in pre-project discussions with customer to thoroughly understand the goals and needs of the project, and for micro planning
- Periodic status updates and senior technical management reviews with customer.
- Priority testing

## Dedicated Resources

- Equipment and manpower- for customer specific contract laboratories

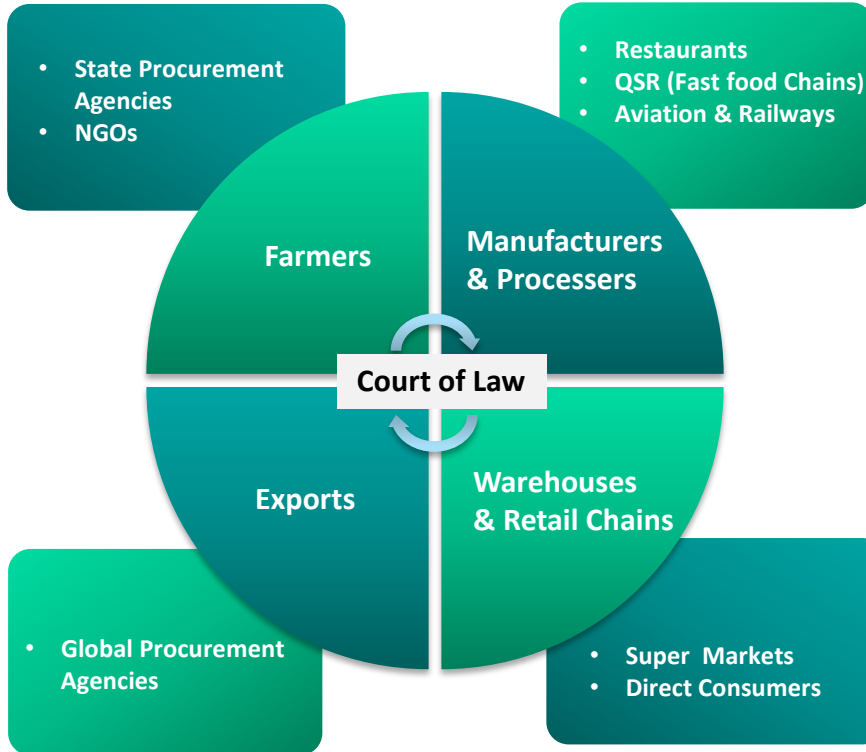
## Pan India

- From farms, cold storages, production units, post production sampling

## Sampling

## Development and validation of methods for testing of proprietary products

# We Serve



**25000**  
Customers  
from 45  
Countries

# Products Tested



Meat, Fish & Poultry



Fruits & Vegetables



Fats & Oils



Ready to Eat



Water



Nutraceuticals & Herbs



Bakery



Confectionary



Dairy



Salt & Spices



Jams & Spreads



Sweets



Additives



Sweeteners & Honey



Food Packaging



Proprietary Foods



Animal Feed



Beverages



- Chemical & nutritional testing
  - Contaminant testing
    - Pest residues, antibiotic residues, toxins, metal impurities, environmental contaminants
  - Microbiology
    - Conventional
    - Rapid tests - kits based
    - RT-PCR
    - VIDAS
  - Molecular testing
    - GMO, Gluten free claim, allergen testing
  - Shelf life testing
  - Water quality testing
- Sampling
  - Method development, validation
  - Mfg sites / Vendor - quality control support
    - Raw material, finished product
  - Packaging testing
  - Label claim evaluations
    - Clinical studies
  - Product safety evaluations
    - Preclinical & *in vitro* testing
  - Product AR&D support
  - Product defect investigations



**ENVIRONMENT, HEALTH & SAFETY**

# An Overview of Services



Environmental Impact Assessment and Environment Management Studies\*



Air Dispersion Modeling Studies



Risk Assessment and Disaster Management Plans



Wild Life Conservation Plans



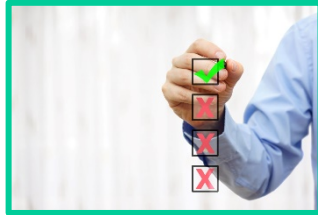
Post Project Monitoring studies



Environment Audits

\*as per Ministry of Environment & Forests & Climate Change (MoEF&CC), Government of India and State Pollution Control Boards

# An Overview of Services



Site Liability Assessments  
and Due Diligence Studies



Occupational Health &  
Industrial Hygiene



Rehabilitation &  
Resettlement Studies



Solid Waste Management



Environmental Baseline Studies  
Covering the Fields of Ambient Air,  
Source Emissions, Water, Soil,  
Noise, Ecology and Demography



Offshore Sampling and  
Analysis of Sediments &  
Water for Physico-Chemical  
and Biological Properties



Analysis of Water, Wastewater and Soil for Physico-chemical & Biological Parameters as per National and International Standards

9/2/2021



VOCs, SVOCs, Dioxins & Furans, TCLP metals, POP's, HAPs

Vimta | Confidential



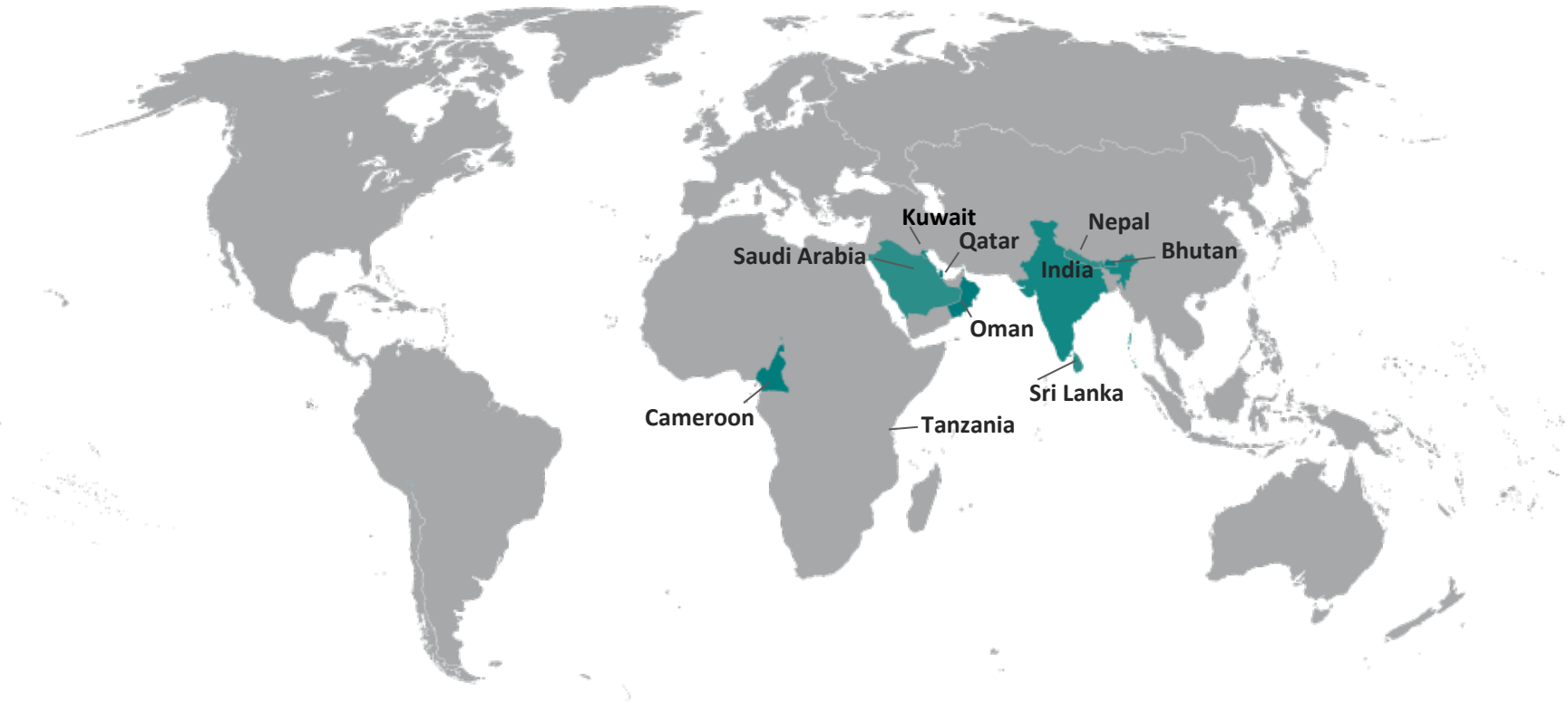
Solid/Hazardous Waste Analysis for Physico- chemical, Elemental Composition and Thermodynamic Properties

73

# National Presence and Experience



# International Presence and Experience



## Our Customer Base Includes



**Government**



**Public Sector**



**Private Sector**

who benefit from our experience of conducting more than 900 Impact assessment studies in the field of oil and gas, petroleum, power, mining, chemical, cement, ferrous and non-ferrous, drugs/intermediates, infrastructure, offshore installations, industrial parks and SEZ.



# Spectrum of Industries



Mining of Minerals



Metallurgical Industries



Industrial Estates



Offshore and Onshore  
Oil and Gas Exploration



Airports



Townships and Area  
Development Projects



Thermal Power Plants



Oil & Gas  
Transportation Pipeline  
Industries



Building &  
Construction Projects



Coal Washeries



Asbestos Milling



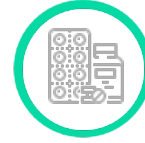
Automobile and Auto  
Component



Sea Ports



Cement



Chemical & Pharma

# Industrial Groups - India

## Public Sector



9/2/2021

## Private Sector



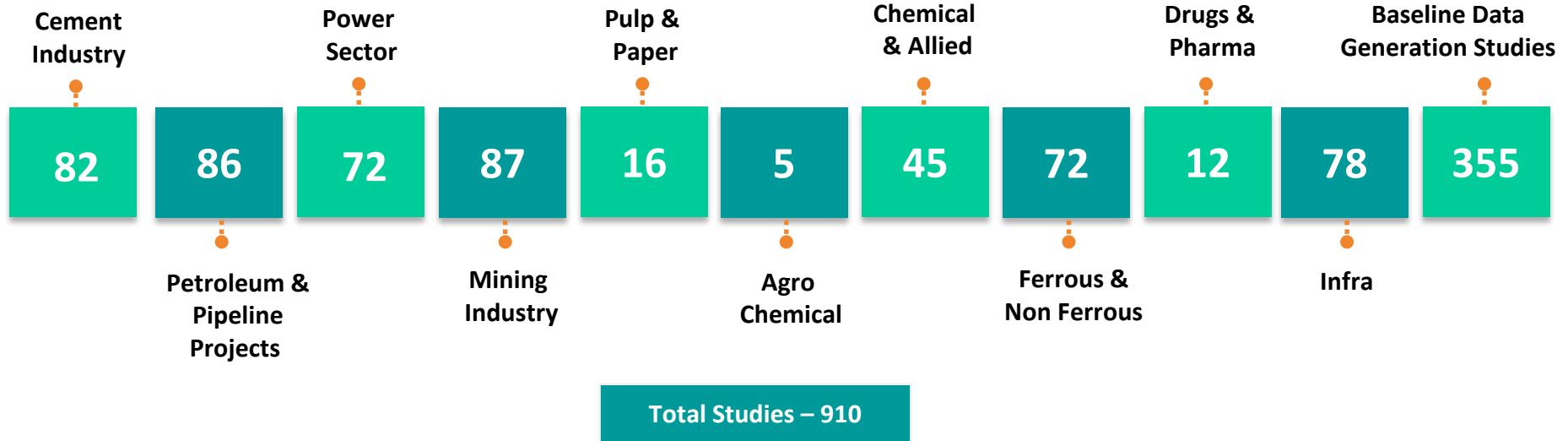
Vimta | Confidential

78

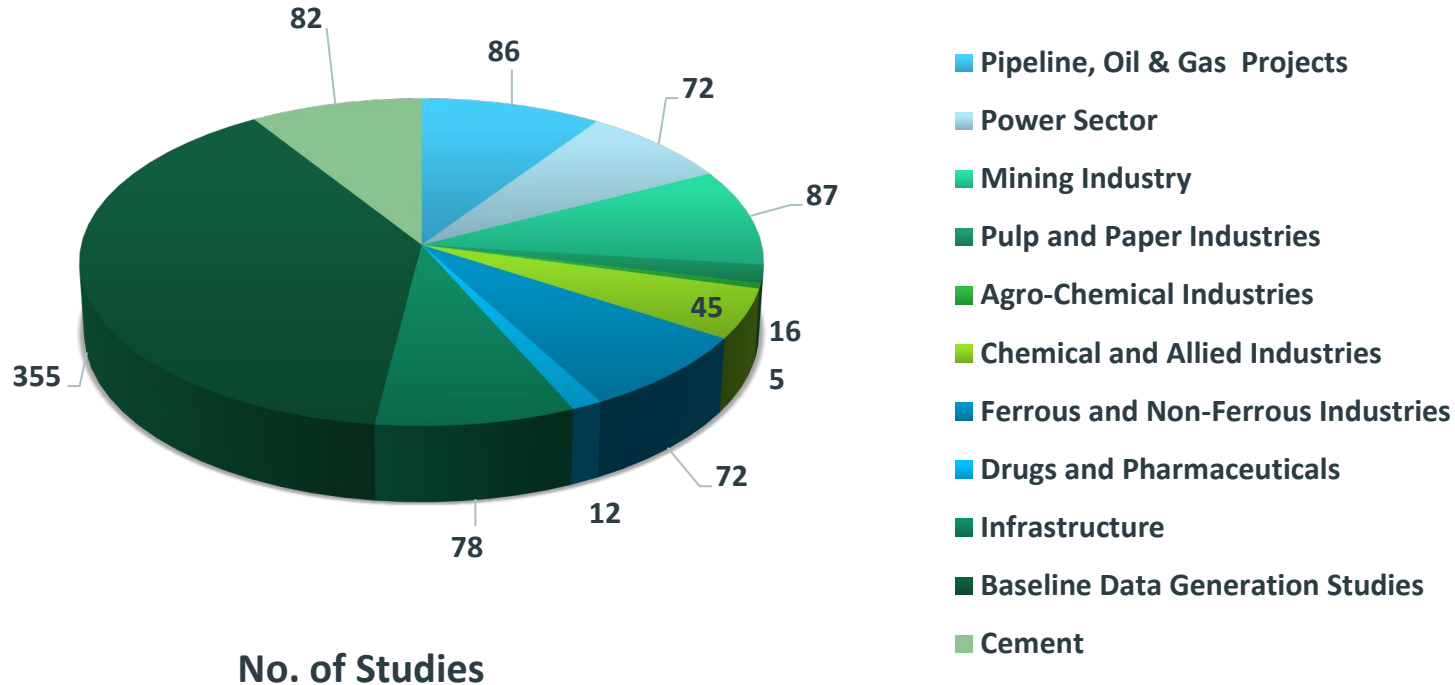
# Industrial Groups - International



# Experience in EIA Studies



# Major Industry Types



# Accreditations



# Manpower - Environment Division

Important Personnel Include :

Mr. M. Janardhan	Head & Vice President
Dr. B. Chandra Sekhar	Associate Vice President
Dr K.S. Muneeswaran	Sr. Manager
Mr. Utpal Mazumder	Sr. Manager BD
Mr. G. V. Raghava Rao	Manager
Dr Rajdulal Das	Manager BD
Mr. P Niranjan Babu	Dy. Manager
Mr. B.K.Choudhary	Dy. Manager
Dr. G Dasaratha Ram	Dy. Manager
Ms Bh. Durga Bhavani	Group Leader
Mr. ERS Srinivasan	Group Leader
Dr. M. Subba Reddy	Group Leader
Mr. Ch. Venkatesam	Group Leader
Mr. M Sivakumar	Group Leader

**About 50 Engineers,  
Scientists & Doctorates**

**About 30 Field Scientists to  
Handle Monitoring Works**

# Major Equipment



Respirable  
Dust Samplers  
(120 No.s)



PM2.5 & PM10  
Samplers  
(60 No.s)



Automatic Stack  
Monitoring Kits  
(8 No.s)



Automatic  
Weather Stations  
(20 No.s)



Portable Water  
Analysis Kits  
(12 No.s)



Integrated Noise  
Level Meter  
(10 No.s)



Spectrophotometer  
(12 No.s)



HPLC  
(22 No.s)



GCMS  
(10 No.s)



# Major Field Monitoring Instrumentation

- Iso-kinetic sampling train (Comply with USEPA/EN method)
- Flue gas analyser from Horiba & others
- Dioxin/furan, heavy metals sampling kit
- Respirable dust sampler (PM 10)
- High volume sampler (HVS)
- Fine particulate sampler (PM 2.5)
- Carbon monoxide monitor (NDIR)
- Stack volatiles organic sampling train (VOST)
- Photo ionization & flame ionization detector (PID & FID)
- Organic vapor sampler
- Portable online particles monitor (Count & Mass)
- Portable weather monitoring station
- Portable wind anemometer



# Major Field Monitoring Instrumentation

- Indoor air quality monitor
- Compressed air quality monitoring equipment
- Portable water & soil testing Kit
- Water level meter
- Low volume & personal air sampler
- Integrated sound level meter (Type A)



# Major Analytical Instrumentation

- HPLC
  - ICP-MS
  - AAS
  - HRGC-HRMS
  - GC-MS/MS
  - GC-FID
  - Ion Chromatograph (IC)
  - LC-MS/MS
  - Karl Fisher titrator
  - High speed centrifuge
  - ELISA
  - Platinum basin
  - BOD incubator
- UV Vis spectrophotometer
  - Micro balance
  - Laminar air flow
  - Air handling units
  - Microscope
  - Circulating water bath
  - Rotary evaporator
  - Centrifuge
  - Millipore water filtration system
  - Turbo evaporator
  - Melting point apparatus
  - Florimeter



# Our Partnership Philosophy

We work as an extended arm of our partner!

**Belief in Long Term  
Sustainable Relationships**

**Transparent**



**Adaptable**

**Flexible**



# Vimta<sup>®</sup>

Driven by Quality. Inspired by Science.

## Vimta Labs Limited

142, IDA , Phase 2, Cherlapally  
Hyderabad - 500051

## Life Sciences Facility

#5, MN Park, Genome Valley,  
Shameeret, Hyderabad - 101



[www.vimta.com](http://www.vimta.com)



[bd@vimta.com](mailto:bd@vimta.com)



+91 40 6740 4040